

# CW SERIES CHILLER SYSTEM

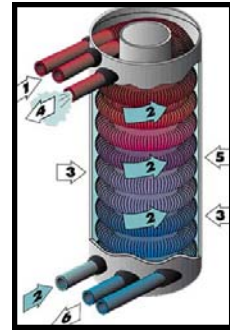


## Water Cooled Chiller System

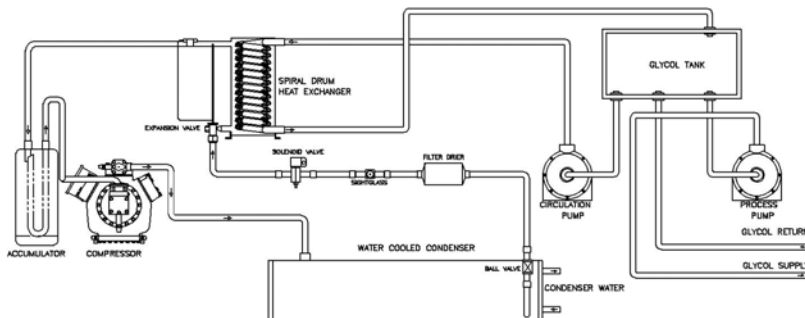
The CW Series is designed for new applications and the retrofit market.

Utilizing proven, efficient, core components we offer a system with Glycol/Water Storage Tank and dedicated Glycol/Water Process Pump to circulate to the processing plant.

- **Large Size Range**– The CW Series is offered in various sizes from 10 HP to 150HP in multiple compressor configurations.
- **Spiral Drum Heat Exchanger**– Each model is supplied standard with the proven Spiral Drum Heat Exchanger.
- **Cleanable Tube & Shell Water Cooled Condensers**– Supplied with standard Cleanable Tube & Shell Water Cooled Condensers. Water Regulating Valves are also included.
- **CR110 Microprocessor Controller**– The optional CR110 Controller can be installed on each model. Independent Control Cards provide improved Compressor, Evaporator, and Pump Control.
- **Stainless Steel Glycol Pumps**– System supplied standard with an internal Chiller Evaporator Pump and a Dedicated Glycol Process Pump.



CW SERIES CHILLER SYSTEM FLOW ILLUSTRATION



*When Keeping Cool is Everything™*  
Manufacturers and Suppliers of the Pro Chiller and Proformer Product Line.

Pro Refrigeration Inc.  
Tel: 253.735.9466 / 800.845.7781

P.O. Box 1528  
Fax: 253.735.2631

Auburn, WA 98071-1528  
[www.prochiller.com](http://www.prochiller.com)

**CW SERIES CHILLER SYSTEMS**  
**10 HP TO 50 HP WATER COOLED**

**SINGLE COMPRESSOR SYSTEMS**

**MINIMUM CIRCUIT AMPACITY**

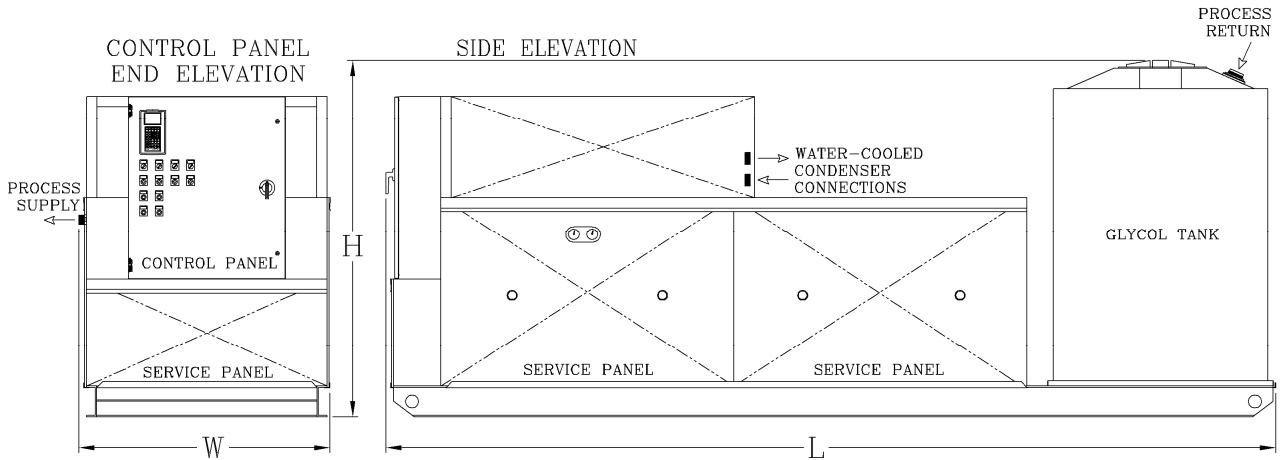
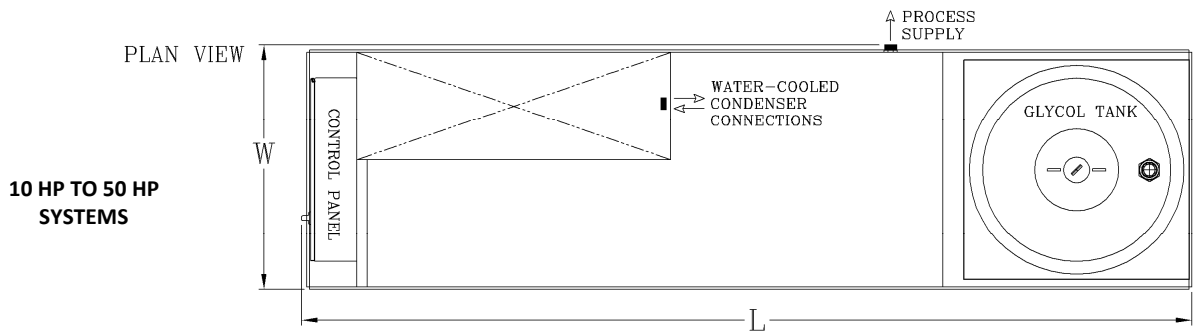
WATER COOLED CHILLER SYSTEM	MODEL	CAPACITY		PROCESS PUMP	COND WATER CONNECTIONS (INCHES)	TANK CAPACITY (GAL)	DIMENSIONS L X W X H (INCHES)	MINIMUM CIRCUIT AMPACITY		GLYCOL FITTING CONNECTION SIZES
		28°F GLYCOL 110°F COND 10°F SUBCOOL	33°F GLYCOL 110°F COND 10°F SUBCOOL					208-230V/3PH/60HZ	460V/3PH/60HZ	
10 HP	PB110F3R4250-W	75,900	86,400	3 HP	1.25"	250	134 X 48 X 70	68 Amps	34 Amps	All Glycol Supply and Return Connections are 2 Inch
20 HP	PB120F5R4250-W	127,400	145,000	3 HP	2"	250	170 X 48 X 70	93 Amps	46 Amps	
30 HP	PB130F7R4250-W	192,100	217,000	3 HP	2"	250	170 X 48 X 70	141 Amps	69 Amps	
40 HP	PB140F10R4250-W	288,000	325,000	3 HP	2.5"	250	218 X 48 X 70	211 Amps	105 Amps	
50 HP	PB150F14R4250-W	341,000	386,000	5 HP	2"	250	228 X 48 X 70	254 Amps	127 Amps	

CW SERIES SYSTEMS ARE SUPPLIED STANDARD WITH:

- SERVICE PANELS
- CLEANABLE WATER COOLED CONDENSERS WITH REGULATING VALVES
- LIQUID LINE SOLENOID VALVE, SIGHTGLASS, AND FILTER DRIER
- SPIRAL DRUM EVAPORATOR WITH TXV'S
- LOW PRESSURE FREEZE CONTROLS
- ETL (UL 508) CONTROL PANEL WITH:
  - ALL MOTOR STARTERS
  - COMPRESSOR CIRCUIT BREAKERS
  - CONTROL TRANSFORMER
  - ELECTRONIC TEMP CONTROL WITH DISPLAY



PRO REFRIGERATION INC  
 PO BOX 1528  
 AUBURN, WA 98071  
 TEL: 253-735-9466  
 TOLL FREE: 800-845-7781 FAX: 253-735-2631  
 WWW.PROCHILLER.COM INFO@PROREFRIGERATION.COM



**CW SERIES CHILLER SYSTEMS**  
**20 HP TO 100 HP WATER COOLED**

**DUAL COMPRESSOR SYSTEMS**

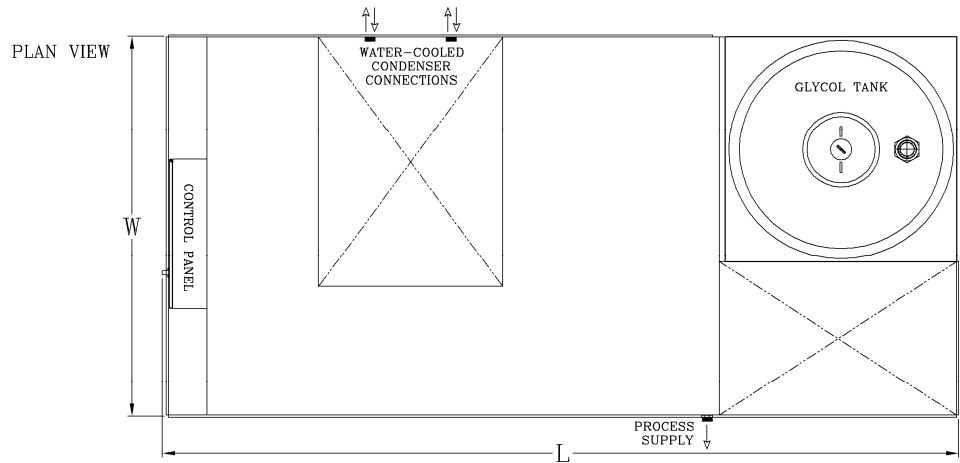
WATER COOLED CHILLER SYSTEM	MODEL	CAPACITY		PROCESS PUMP	COND WATER CONNECTIONS (INCHES)	TANK CAPACITY (GAL)	DIMENSIONS L X W X H (INCHES)	MINIMUM CIRCUIT AMPACITY		GLYCOL FITTING CONNECTION SIZES
		28°F GLYCOL 110°F COND 10°F SUBCOOL	33°F GLYCOL 110°F COND 10°F SUBCOOL					208-230V/3PH/60HZ	460V/3PH/60HZ	
20 HP	PB210F6R4400-W	151,800	172,800	5 HP	2 EA. 1.25"	400	151 X 94 X 70	122 Amps	61 Amps	All Glycol Supply and Return Connections are 2 Inch
40 HP	PB220F10R4400-W	254,800	290,000	5 HP	2 EA. 2"	400	184 X 94 X 70	169 Amps	84 Amps	
60 HP	PB230F14R4400-W	384,200	434,000	7.5 HP	2 EA. 2"	400	184 X 94 X 70	257 Amps	126 Amps	
80 HP	PB240F20R4400-W	576,000	650,000	7.5 HP	2 EA. 2.5"	400	232 X 94 X 70	384 Amps	192 Amps	
100 HP	PB250F28R4400-W	682,000	772,000	7.5 HP	2 EA. 2"	400	234 X 94 X 70	456 Amps	228 Amps	

CW SERIES SYSTEMS ARE SUPPLIED STANDARD WITH:  
 SERVICE PANELS  
 CLEANABLE WATER COOLED CONDENSERS WITH REGULATING VALVES  
 LIQUID LINE SOLENOID VALVE, SIGHTGLASS, AND FILTER DRIER  
 SPIRAL DRUM EVAPORATOR WITH TXV'S  
 LOW PRESSURE FREEZE CONTROLS  
 ETL (UL 508) CONTROL PANEL WITH:  
 • ALL MOTOR STARTERS  
 • COMPRESSOR CIRCUIT BREAKERS  
 • CONTROL TRANSFORMER  
 • ELECTRONIC TEMP CONTROL WITH DISPLAY

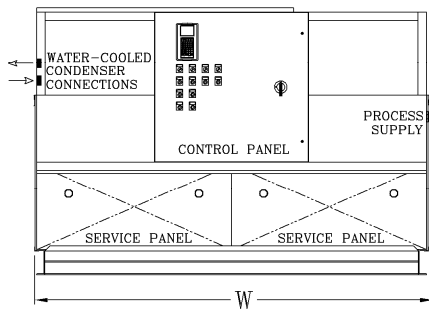


PRO REFRIGERATION INC  
 PO BOX 1528  
 AUBURN, WA 98071  
 TEL: 253-735-9466  
 TOLL FREE: 800-845-7781 FAX: 253-735-2631  
 WWW.PROCHILLER.COM INFO@PROREFRIGERATION.COM

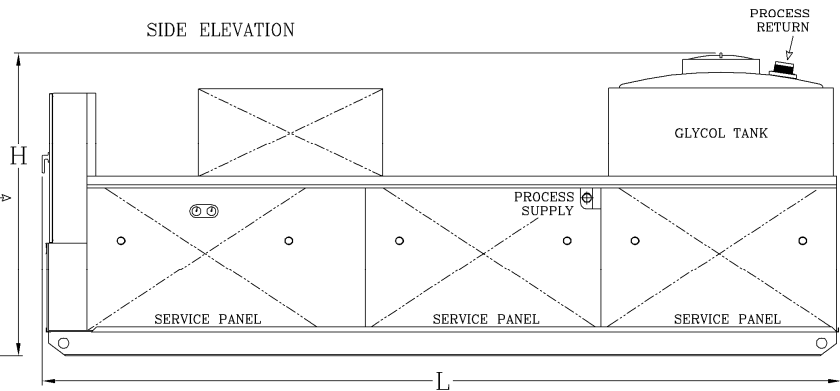
**20 HP TO 100 HP SYSTEMS**



**CONTROL PANEL END ELEVATION**



**SIDE ELEVATION**



**CW SERIES CHILLER SYSTEMS**  
**90 HP TO 150 HP WATER COOLED**

**TRIPLE COMPRESSOR SYSTEMS**

**MINIMUM CIRCUIT AMPACITY**

WATER COOLED CHILLER SYSTEM	MODEL	CAPACITY		PROCESS PUMP	COND WATER CONNECTIONS (INCHES)	TANK CAPACITY (GAL)	DIMENSIONS L X W X H (INCHES)	MINIMUM CIRCUIT AMPACITY		GLYCOL FITTING CONNECTION SIZES
		28°F GLYCOL 110°F COND 10°F SUBCOOL	33°F GLYCOL 110°F COND 10°F SUBCOOL					208-230V/3PH/60HZ	460V/3PH/60HZ	
90 HP	PB330F21R4400-W	576,300	651,000	7.5HP	3 EA. 2"	400	184 X 94 X 80	364 Amps	182 Amps	Supply & Return Connections are 2 Inch
120 HP	PB340F30R4400-W	864,000	975,000	7.5HP	3 EA. 2.5"	400	232 X 94 X 80	549 Amps	275 Amps	
150 HP	PB350F43R4400-W	1,023,000	1,158,000	7.5HP	3 EA. 2"	400	232 X 94 X 80	653 Amps	326 Amps	

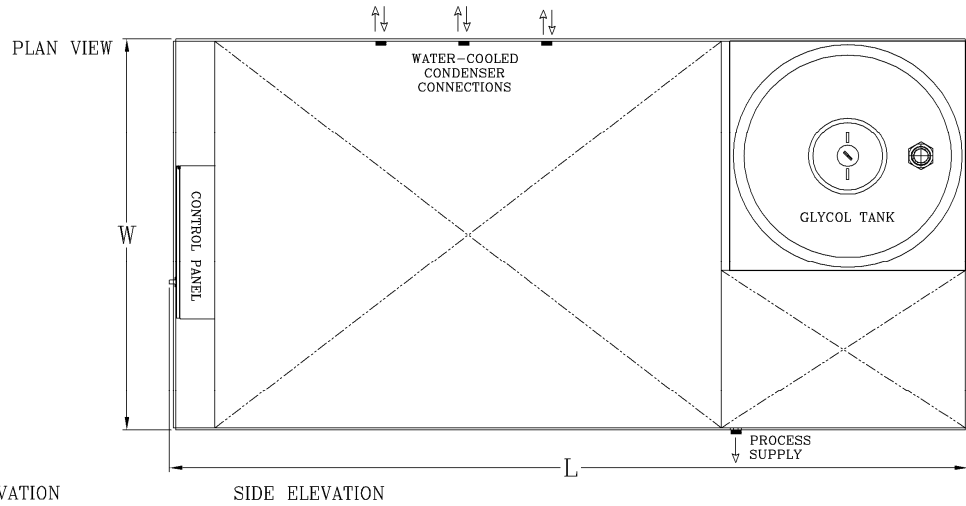
CW SERIES SYSTEMS ARE SUPPLIED STANDARD WITH:

- SERVICE PANELS
- CLEANABLE WATER-COOLED CONDENSERS WITH REGULATING VALVES
- LIQUID LINE SOLENOID VALVE, SIGHTGLASS, AND FILTER DRIER
- SPIRAL DRUM EVAPORATOR WITH TXV'S
- LOW PRESSURE FREEZE CONTROLS
- ETL (UL 508) CONTROL PANEL WITH:
  - ALL MOTOR STARTERS
  - COMPRESSOR CIRCUIT BREAKERS
  - CONTROL TRANSFORMER
  - ELECTRONIC TEMP CONTROL WITH DISPLAY

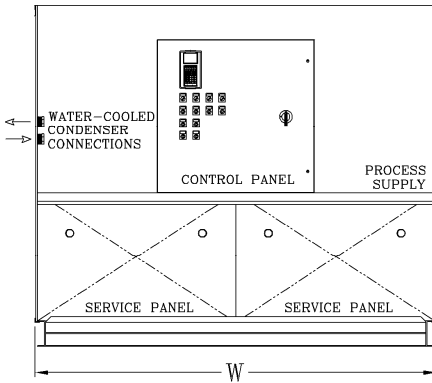


PRO REFRIGERATION INC  
 PO BOX 1528  
 AUBURN, WA 98071  
 TEL: 253-735-9466  
 TOLL FREE: 800-845-7781 FAX: 253-735-2631  
 WWW.PROCHILLER.COM INFO@PROREFRIGERATION.COM

**90 HP TO 150 HP SYSTEMS**



CONTROL PANEL END ELEVATION



SIDE ELEVATION

